

Checklist of angiosperms of Bhor Taluka, Pune District, northern Western Ghats of Maharashtra, India, based on herbarium records

Umesh Awasarkar, Aboli Kulkarni, Mandar N. Datar* and Anuradha Upadhye

M.A.C.S. Agharkar Research Institute, Gopal Ganesh Agarkar Road, Pune, Maharashtra 411004, India.

* Corresponding author. E-mail: mndatar@aripune.org

ABSTRACT: Bhor is an important and floristically rich Taluka of Pune district, Maharashtra state, located on the Western Ghats of India. We provide here a comprehensive checklist of angiosperms occurring in this region based on records of the Agharkar Research Institute Herbarium (AHMA). A total number of 663 species of Angiosperms belonging to 420 genera under 99 families are documented in this paper.

DOI: 10.15560/10.4.835

INTRODUCTION

India is a country of rich biological diversity having world's biodiversity hotspots like Western Ghats (Myers *et al.* 2005). Western Ghats is a chain of mountains running parallel to the West Coast of India, from South of the Tapti river to Kanyakumari, with a single gap (Palghat gap) in between. Western Ghats can be further divided into Northern, Central, and Southern regions. Northern Western Ghats comprises the region from Gujarat running through Maharashtra, Goa, and parts of Karnataka up to Kali River. Pune is an important district of the Maharashtra state whose western part is located on the Northern Western Ghats. The Pune region is highly urbanized with rapid conversion of agricultural lands into non-agricultural uses, deforestation, pollution, and damming. However, 3,648 km² of the total area of the district is protected as forest, including 69 sacred groves (Gadgil & Vartak 1980), reserve forests, two wildlife sanctuaries (Bhimashankar and Mayureshwar) and a recently proposed Tamhini Wildlife Sanctuary. The hilly portion of the Western side of the district is covered by forestlands and includes Talukas like Junnar, Ambegaon, Khed, Maval, Mulshi, Velhe and Bhor, while other talukas of the district have negligible forest. Despite of having such large area under forest, there have been no efforts to document the flora of the Pune district as whole. There are sporadic reports and checklists and floras from small regions of the district such as Khandala (Santapau 1953) and Maval-Ambavane (Venkatarreddy 1969). Bhor is in the extreme southern region of the district (Figure 1) with remarkable diversity of flowering plants. Plants of the Bhor Taluka have never been studied and documented except for some sporadic records, such as Vartak (1959a, 1959b, 1959c) but a comprehensive checklist of the taluka is not available. This paper is the first attempt to fulfill this gap. In this report, we present a checklist of wild angiosperm of the Taluka Bhor from the Pune District.

MATERIALS AND METHODS

Study area

Bhor (18.0262° to 18.3591° N, 73.6240° to 74.0577° E, 591.43 a.s.l.) covers an area of 892 km² of which 122 km² is covered by forest. Bhor has many peaks like Rajgad, Raireshwar, and Vichitragad. The major rivers flowing in the Taluka are Nira, Velvandi, and Gunjavani flowing west to east and Shivaganga from north to south. The two major dams in the taluka are Bhatghar on river Velvandi and Nira-Devghar on Nira. The Taluka is surrounded by Khandala Taluka of Satara district and Purandhar Taluka of the Pune district towards East, Mahad of Raigad district towards West, Velhe, and Haveli of Pune district towards North and Wai Taluka of Satara district towards South. It has 195 villages and total population is 171,719 (Anonymous 2006).

Major part of Bhor Taluka is covered by Deccan trap basalt and thick alluvial soil spread along the bank of Nira and Velvandi. The region is also of historic importance, since it was the major connecting link between the Deccan plateau and the West coast. The soil is deep, with moderately well drained loamy soils. Average rainfall of the study area is 900 m (Anonymous 2006). Being highly fertile and with moderate rainfall, the majority of the area is under agriculture. Major crops are paddy, sorghum, and ragi. Minor crops are Groundnut, Pigeon Pea, and Sugarcane. Major forest types of this region are West Coast semi-evergreen forest, moist deciduous, and dry deciduous forests. The region has also many forest patches protected in the form of sacred groves and reserve forests.

Species records

The data were compiled based on specimens deposited in the Herbarium of Agharkar Research Institute, Pune (AHMA). AHMA hosts many specimens from Bhor collected since 1954, collected by the late Dr. V. D. Vartak, eminent plant taxonomist who worked on the flora of

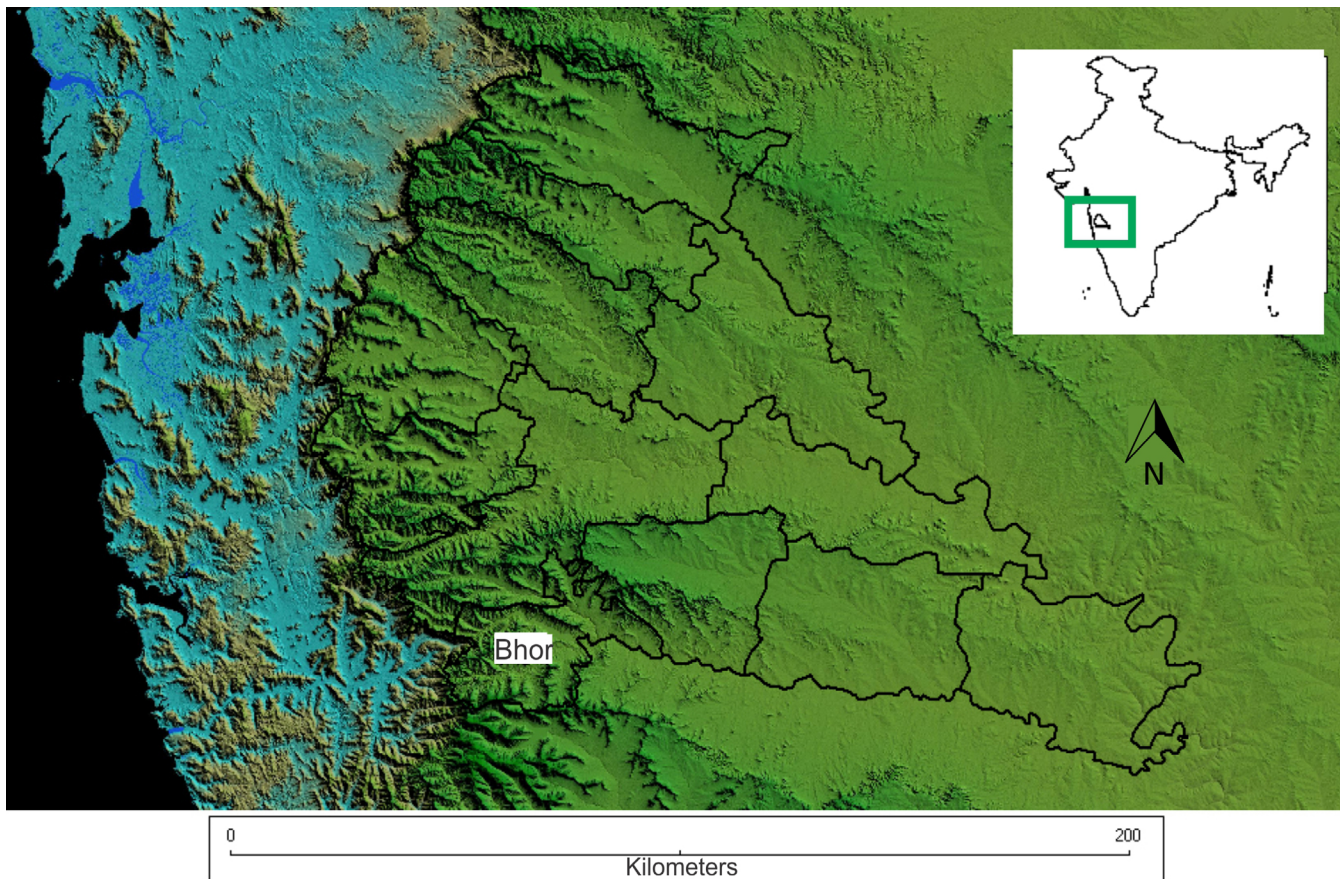


FIGURE 1. Location of the Bhor Taluka in the Pune District of Maharashtra, India.

Western Maharashtra. For compilation of checklist of Bhor Taluka literature studies on earlier works of Bhor Taluka were done (Vartak 1959a, 1959b, 1959c). All the specimens were carefully scrutinized for their identity and for the data recorded on the sheets. Species name, family, status of endemism, and accession number in AHMA are provided (Table 1). Botanical nomenclature follows the plant list (2013). Status of endemism follows the Flora of Maharashtra (Sharma et al. 1996; Singh and Karthikeyan 2000; Singh et al. 2001).

RESULTS AND DISCUSSION

We found a total of 663 species of Angiosperms, from 420 genera and 99 families (Table 1). In addition to these, the Taluka has also many cultivated species.

Amongst the dominant genera, *Cyperus* (18 species) is at the top of the list, followed by *Crotalaria* with 14 species and *Fimbristylis* (13 species). Out of 420 genera recorded, 1.65 % are represented by more than 5 species, whereas 45 % are represented by only a single species. Out of 663 species recorded, 418 are herbs, 66 shrubs, and 82 are tree. In addition, 35 are climbers, 34 undershrubs, 20 climbing shrubs, 1 Straggling Shrub, and 7 scandent shrubs (Figure 2). Leguminosae is the dominant family, with 87 species, followed by Poaceae with 62 species, and Cyperaceae and Compositae having 57 and 49 species, respectively. Out of 99 families, 10 are represented by more than 10 genera, whereas 44 are represented by single genus. Out of 100

families, 11 are represented by more than 10 species, whereas 36 families are represented by a single species.

Out of 663 species, 108 belonging to 35 families are endemic. These species are broadly endemic to the Western Ghats or Peninsular India and/or national endemics. Most endemics species (14) are Poaceae and Leguminosae, followed by Orchidaceae with 12 species. Out of the 108 endemic species recorded, about 50% (55 species) occur in deciduous habitat, followed by 18 species from semi-evergreen habitat. Thirteen species share semi-evergreen and deciduous habitat, while rock outcrops and grasslands have 12 and 10 endemic species, respectively (Figure 3). Another interesting record is of *Crotalaria clavata*, which is Critically Endangered due to habitat loss (Ansari, 2008) and occurs in Bhor.

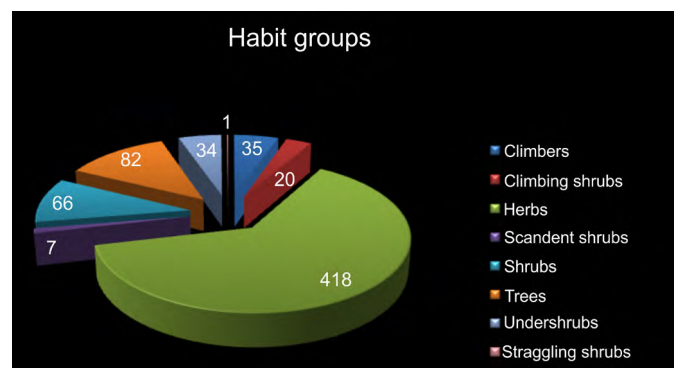


FIGURE 2. Classification of species according to their growth habit.

TABLE 1. List of species.

SPECIES/FAMILY	HABITAT	HABIT	ENDEMISM	AHMA NUMBER
Acanthaceae				
<i>Asystasia dalzelliana</i> Santapau	Terrestrial	Herb	Endemic	5835
<i>Barleria lawii</i> T. Anderson	Terrestrial	Shrub	Endemic	5856
<i>Barleria gibsonii</i> Dalz.	Terrestrial	Undershrub	Endemic	5844
<i>Barleria strigosa</i> Willd.	Terrestrial	Shrub		
<i>Cynarospermum asperrimum</i> (Nees) Vollesen	Terrestrial	Herb	Endemic	5874
<i>Dicliptera foetida</i> (Forssk.) Blatt.	Terrestrial	Undershrub		5907
<i>Eranthemum roseum</i> (Vahl) R. Br.	Terrestrial	Shrub	Endemic	5924
<i>Haplanthodes neilgherryensis</i> (Wight) R. B. Majumdar	Terrestrial	Herb	Endemic	5931
<i>Haplanthodes tentaculatus</i> (L.) R. B. Majumdar	Terrestrial	Herb	Endemic	5933
<i>Haplanthodes verticillatus</i> (Roxb.) R.B.Majumdar	Terrestrial	Herb	Endemic	5941
<i>Hygrophila serpyllum</i> (Nees) T. And.	Marshy	Herb		5985
<i>Justicia adhatoda</i> L.	Terrestrial	Shrub		17536
<i>Justicia betonica</i> L.	Terrestrial	Herb		6000
<i>Justicia nagpurensis</i> A. V. W. Grah.	Terrestrial	Herb		6038
<i>Lepidagathis cristata</i> Willd.	Terrestrial	Herb		6056
<i>Lepidagathis cuspidata</i> Nees	Terrestrial	Undershrub		6065
<i>Neuracanthus sphaerostachys</i> (Nees) Dalz.	Terrestrial	Undershrub		6077
<i>Petalidium barlerioides</i> (Roth) Nees	Terrestrial	Shrub		16762
<i>Rhinacanthus nasutus</i> (L.) Kurz	Terrestrial	Herb		6107
<i>Rostellularia crinita</i> Nees	Terrestrial	Herb		6010
<i>Ruellia patula</i> Jacq.	Terrestrial	Herb		6112
<i>Strobilanthes callosus</i> Nees	Terrestrial	Shrub		5888
Aizoaceae				
<i>Trianthema portulacastrum</i> L.	Terrestrial	Herb		3356
Amaranthaceae				
<i>Achyranthes aspera</i> L.	Terrestrial	Undershrub		6607
<i>Amaranthus spinosus</i> L.	Terrestrial	Herb		14656
<i>Celosia argentea</i> L.	Terrestrial	Herb		6700
<i>Chenopodium album</i> L.	Terrestrial	Herb		6748
<i>Nothosaerva brachiata</i> (L.) Wight	Terrestrial	Herb		6732
<i>Pupalia lappacea</i> (L.) Juss.	Terrestrial	Herb		6736
Amaryllidaceae				
<i>Crinum asiaticum</i> L.	Terrestrial	Herb		7838
<i>Pancratium parvum</i> Dalzell	Terrestrial	Herb	Endemic	7853
Anacardiaceae				
<i>Holigarna arnottiana</i> Hook. f.	Terrestrial	Tree	Endemic	1319
<i>Lannea coromandelica</i> (Houtt.) Merr.	Terrestrial	Tree		1323
Apiaceae				
<i>Centella asiatica</i> (L.) Urb.	Terrestrial	Herb		3387
<i>Heracleum grande</i> (Dalzell & A. Gibson) Mukhop.	Terrestrial	Herb	Endemic	3416
<i>Pimpinella adscendens</i> Dalz.	Terrestrial	Herb	Endemic	3420
<i>Pimpinella heyneana</i> (DC.) Benth.	Terrestrial	Herb		3429
<i>Pimpinella tomentosa</i> Engl.	Terrestrial	Herb	Endemic	3436
<i>Trachyspermum roxburghianum</i> (DC.) H. Wolff	Terrestrial	Herb	Endemic	3469
Apocynaceae				
<i>Alstonia scholaris</i> (L.) R. Br.	Terrestrial	Tree		4622
<i>Anodendron paniculatum</i> A. DC.	Terrestrial	Shrub		14054
<i>Asclepias curassavica</i> L.	Terrestrial	Herb		4747
<i>Calotropis gigantea</i> (L.) Dryand.	Terrestrial	Shrub		4755
<i>Carissa spinarum</i> L.	Terrestrial	Shrub		
<i>Ceropegia hirsuta</i> Wight & Arn.	Terrestrial	Climbing Shrub		4770
<i>Ceropegia lawii</i> Hook. f.	Terrestrial	Herb	Endemic	4777
<i>Cosmostigma cordatum</i> (Poir.) M. R. Almeida	Terrestrial	Climber		4784
<i>Cryptolepis dubia</i> (Burm.f.) M. R. Almeida	Terrestrial	Climbing Shrub		4722
<i>Hemidesmus indicus</i> (L.) R. Br. ex Schult.	Terrestrial	Climbing Shrub		4733
<i>Holarrhena pubescens</i> Wall. ex G. Don	Terrestrial	Tree		4650
<i>Hoya wightii</i> Hook. f.	Epiphytic	Climber		4821
<i>Gymnema sylvestre</i> (Retz.) R.Br. ex Sm.	Terrestrial	Climber		4810
<i>Rauvolfia verticillata</i> (Lour.) Baill.	Terrestrial	Shrub		4687
<i>Vallisneria spiralis</i> (L.) Kuntze	Terrestrial	Climbing Shrub		4698
<i>Wrightia tinctoria</i> R.Br.	Terrestrial	Tree		4706
Araceae				
<i>Ariopsis peltata</i> Nimmo	Terrestrial	Herb		

TABLE 1. Continued.

SPECIES/FAMILY	HABITAT	HABIT	ENDEMISM	AHMA NUMBER
<i>Arisaema murrayi</i> (J.Graham) Hook.	Terrestrial	Herb	Endemic	8218
<i>Cryptocoryne retrospiralis</i> (Roxb.) Kunth	Marshy	Herb		8236
<i>Remusatia vivipara</i> (Roxb.) Schott	Epiphytic	Herb		8258
<i>Spirodela polyrrhiza</i> (L.) Schleid.	Aquatic	Herb		15791
Arecaceae				
<i>Phoenix sylvestris</i> (L.) Roxb.	Terrestrial	Tree		
Asparagaceae				
<i>Asparagus racemosus</i> Willd.	Terrestrial	Climber		7957
<i>Chlorophytum glaucum</i> Dalz.	Terrestrial	Herb	Endemic	7974
Balsaminaceae				
<i>Impatiens acaulis</i> Arn.	Lithophytic	Herb		824
<i>Impatiens balsamina</i> L.	Terrestrial	Herb		835
<i>Impatiens dalzellii</i> Hook. f. & Thoms.	Lithophytic	Herb	Endemic	863
<i>Impatiens inconspicua</i> B.Heyne ex Wight & Arn.	Terrestrial	Herb	Endemic	868
<i>Impatiens lawii</i> Hook. f. & Thoms.	Terrestrial	Herb	Endemic	883
<i>Impatiens minor</i> (DC.) Bennet	Terrestrial	Herb	Endemic	873
<i>Impatiens oppositifolia</i> L.	Terrestrial	Herb		14474
<i>Impatiens pulcherrima</i> Dalz.	Terrestrial	Herb	Endemic	899
Begoniaceae				
<i>Begonia crenata</i> Dryand.	Terrestrial	Herb	Endemic	3350
Bignoniaceae				
<i>Heterophragma quadriloculare</i> (Roxb.) K. Schum.	Terrestrial	Tree		5794
<i>Stereospermum tetragonum</i> DC.	Terrestrial	Tree		5800
Boraginaceae				
<i>Cordia dichotoma</i> G. Forst.	Terrestrial	Tree		
<i>Cordia sinensis</i> Lam.	Terrestrial	Tree		5026
<i>Heliotropium marifolium</i> Koen. ex Retz.	Terrestrial	Herb		5053
<i>Heliotropium supinum</i> L.	Terrestrial	Herb		5065
<i>Trichodesma inaequale</i> Edgew.	Terrestrial	Herb		5100
Brassicaceae				
<i>Cardamine trichocarpa</i> Hochst. ex A. Rich.	Terrestrial	Herb		177
Burmanniaceae				
<i>Burmannia pusilla</i> (Miers) Thwaites.	Marshy	Herb		7553
Burseraceae				
<i>Canarium strictum</i> Roxb.	Terrestrial	Tree		17364
Campanulaceae				
<i>Campanula dimorphantha</i> Schweinf.	Terrestrial	Herb		4469
<i>Lobelia alsinoides</i> Lam.	Terrestrial	Herb		4437
<i>Lobelia nicotianifolia</i> Roth ex Schult.	Terrestrial	Herb		4458
<i>Wahlenbergia erecta</i> (Roth ex Schult.) Tuyn	Terrestrial	Herb		4479
<i>Wahlenbergia marginata</i> (Thunb.) A. DC.	Terrestrial	Herb		4490
Cannabaceae				
<i>Celtis timorensis</i> Spanoghe	Terrestrial	Tree		14184
<i>Trema orientalis</i> (L.) Blume	Terrestrial	Tree		7339
Capparaceae				
<i>Capparis moonii</i> Wight	Terrestrial	Straggling Shrub		17318
<i>Capparis spinosa</i> L.	Terrestrial	Scandent Shrub		218
<i>Capparis zeylanica</i> L.	Terrestrial	Scandent Shrub		221
Caryophyllaceae				
<i>Polycarpon prostratum</i> (Forssk.) Aschers. & Schweinf.	Terrestrial	Herb		339
Celastraceae				
<i>Arnicratea grahamii</i> (Wight) N. Halle	Terrestrial	Shrub		1049
<i>Celastrus paniculatus</i> Willd	Terrestrial	Climbing Shrub		1059
<i>Maytenus rothiana</i> (Walp.) Ramamoorthy	Terrestrial	Scandent Shrub		1075
Cleomaceae				
<i>Cleome viscosa</i> L.	Terrestrial	Herb		21612
Colchicaceae				
<i>Gloriosa superba</i> L.	Terrestrial	Climber		8013
<i>Iphigenia indica</i> (L.) A. Gray ex Kunth	Terrestrial	Herb		8024
Combretaceae				
<i>Combretum latifolium</i> Blume	Terrestrial	Shrub		2987
<i>Getonia floribunda</i> Roxb.	Terrestrial	Shrub		2971
<i>Terminalia chebula</i> Retz.	Terrestrial	Tree		3005
<i>Terminalia elliptica</i> Willd.	Terrestrial	Tree		3016

TABLE 1. Continued.

SPECIES/FAMILY	HABITAT	HABIT	ENDEMISM	AHMA NUMBER
<i>Terminalia paniculata</i> Roth	Terrestrial	Tree	Endemic	3020
Commelinaceae				
<i>Commelina benghalensis</i> L.	Marshy	Herb		8117
<i>Cyanotis cristata</i> (L.) D. Don	Marshy	Herb		8142
<i>Cyanotis fasciculata</i> (B. Heyne ex Roth) Schult. & Schult.f.	Terrestrial	Herb		8151
<i>Cyanotis pilosa</i> Schult. & Schult.f.	Terrestrial	Herb		8162
<i>Cyanotis tuberosa</i> (Roxb.) Schult. & Schult.f.	Terrestrial	Herb		8157
<i>Murdannia spirata</i> (L.) G. Bruckn.	Terrestrial	Herb		8170
Compositae				
<i>Acanthospermum hispidum</i> DC.	Terrestrial	Herb		3800
<i>Acmella paniculata</i> (Wall. ex DC.) R.K.Jansen	Terrestrial	Herb		4277
<i>Adenoon indicum</i> Dalzell	Terrestrial	Herb	Endemic	3804
<i>Adenostemma lavenia</i> (L.) Kuntze	Terrestrial	Herb		3807
<i>Ageratum conyzoides</i> (L.) L.	Terrestrial	Herb		3818
<i>Artemisia japonica</i> Thumb.	Terrestrial	Undershrub		3859
<i>Artemisia nilagirica</i> (C. B. Cl.) Pamp.	Terrestrial	Shrub		3840
<i>Artemisia pallens</i> Wall. ex DC.	Terrestrial	Herb		3843
<i>Bidens biternata</i> (Lour.) Merr. & Sherff	Terrestrial	Herb		3868
<i>Blumea malcolmii</i> Hook.f.	Terrestrial	Herb	Endemic	3892
<i>Blumea membranacea</i> DC.	Terrestrial	Herb		3911
<i>Caesulia axillaris</i> Roxb.	Marshy	Herb		3943
<i>Erigeron trilobus</i> (Decne.) Boiss.	Terrestrial	Herb		3989
<i>Cyanthillium cinereum</i> (L.) H. Rob.	Terrestrial	Herb		4322
<i>Cyathocline purpurea</i> (Buch.-Ham. ex D. Don) Kuntze	Terrestrial	Herb		4014
<i>Dichrocephala integrifolia</i> (L. f.) Kuntze	Terrestrial	Herb		4028
<i>Dicoma tomentosa</i> Cass.	Terrestrial	Herb		16745
<i>Echinops echinatus</i> Roxb.	Terrestrial	Herb		4034
<i>Eclipta prostrata</i> (L.) L.	Terrestrial	Herb		4043
<i>Elephantopus scaber</i> L.	Terrestrial	Herb		4054
<i>Erigeron sublyratus</i> Roxb. ex DC.	Terrestrial	Herb		4073
<i>Galinsoga parviflora</i> Cav.	Terrestrial	Herb		4080
<i>Glossocardia bosvallia</i> (L. f.) DC.	Terrestrial	Herb		21768
<i>Gnaphalium polycaulon</i> Pers.	Terrestrial	Herb		4088
<i>Gnomophalium pulvinatum</i> (Delile) Greuter	Terrestrial	Herb		4113
<i>Goniocaulon indicum</i> (Klein ex Willd.) Benth ex C.B. Clarke	Terrestrial	Herb		1418
<i>Grangea maderaspatana</i> (L.) Desf.	Terrestrial	Herb		4121
<i>Gynura bicolor</i> (Roxb. ex Willd.) DC.	Terrestrial	Herb		14086
<i>Kleinhia grandiflora</i> (Wall. ex DC.) N. Rani	Terrestrial	Shrub		4172
<i>Lamprachaenium microcephalum</i> (Dalzell) C.B. Cl.	Terrestrial	Herb	Endemic	4159
<i>Nanothamnus sericeus</i> T. Thoms.	Terrestrial	Herb	Endemic	4169
<i>Pentanema cernuum</i> (Dalz.) Ling	Terrestrial	Herb		4344
<i>Phyllocephalum phyllolaenum</i> (DC.) Narayana	Terrestrial	Herb		3975
<i>Phyllocephalum tenue</i> (C. B. Cl.) Narayana	Terrestrial	Herb		3979
<i>Pulicaria wightiana</i> (DC) C. B. Cl.	Terrestrial	Herb		4191
<i>Sclerocarpus africanus</i> Jacq. ex Murray	Terrestrial	Undershrub		4200
<i>Senecio bombayensis</i> Balakr.	Terrestrial	Herb		4216
<i>Senecio dalzellii</i> C. B. Cl.	Terrestrial	Herb	Endemic	4204
<i>Sigesbeckia orientalis</i> L.	Terrestrial	Herb		4238
<i>Sonchus brachyotus</i> DC.	Terrestrial	Herb		4253
<i>Sonchus oleraceus</i> (L.) L.	Terrestrial	Herb		4259
<i>Sphaeranthus indicus</i> L.	Terrestrial	Herb		4260
<i>Tricholepis amplexicaulis</i> C. B. Cl.	Terrestrial	Herb	Endemic	4296
<i>Tricholepis glaberrima</i> DC.	Terrestrial	Herb		4298
<i>Tricholepis radicans</i> (Roxb.) DC.	Terrestrial	Herb	Endemic	4306
<i>Tridax procumbens</i> (L.) L.	Terrestrial	Herb		4318
<i>Baccharoides anthelmintica</i> (L.) Moench	Terrestrial	Herb		3965
<i>Acilepis divergens</i> (Roxb.) H. Rob. & Skvarla	Terrestrial	Herb		4332
<i>Xanthium strumarium</i> L.	Terrestrial	Undershrub		4360
Convolvulaceae				
<i>Argyreia elliptica</i> Arn. ex Choisy	Terrestrial	Climber		5125
<i>Argyreia strigosa</i> (Roth) Roberty	Terrestrial	Climber		5136
<i>Convolvulus arvensis</i> L.	Terrestrial	Herb		5143
<i>Dinetus racemosus</i> (Roxb.) Buch.-Ham. ex Sweet	Terrestrial	Climber		5294
<i>Ipomoea cairica</i> (L.) Sweet	Terrestrial	Climber		22026

TABLE 1. Continued.

SPECIES/FAMILY	HABITAT	HABIT	ENDEMISM	AHMA NUMBER
<i>Ipomoea biflora</i> (L.) Pers.	Terrestrial	Herb		5179
<i>Ipomoea nil</i> (L.) Roth	Terrestrial	Climbing Shrub		5210
<i>Merremia gangetica</i> Cufod.	Terrestrial	Herb		5276
<i>Merremia umbellata</i> (L.) Hall. f.	Terrestrial	Climber		5279
<i>Rivea hypocrateriformis</i> Choisy	Terrestrial	Climbing Shrub		5307
Crassulaceae				
<i>Kalanchoe olivacea</i> Dalz.	Terrestrial	Herb	Endemic	2939
Cucurbitaceae				
<i>Cucumis melo</i> L.	Terrestrial	Herb		3269
<i>Diplocyclos palmatus</i> (L.) C. Jeffrey	Terrestrial	Climber		3283
<i>Solena amplexicaulis</i> (Lam.) Gandhi	Terrestrial	Climber		3301
<i>Trichosanthes tricuspidata</i> Lour.	Terrestrial	Climber		3321
<i>Zehneria scabra</i> Sond.	Terrestrial	Climber		3308
Cyperaceae				
<i>Bolboschoenus maritimus</i> subsp. <i>affinis</i> (Roth) T. Koyama	Marshy	Herb		10174
<i>Bulbostylis densa</i> (Wall.) Hand.-Mazz.	Marshy	Herb		8543
<i>Carex baccans</i> Nees	Marshy	Herb		8561
<i>Carex cruciata</i> Wahlenb.	Terrestrial	Herb		8570
<i>Cyperus alopecuroides</i> Rottb.	Marshy	Herb		10480
<i>Cyperus alulatus</i> J. Kern	Terrestrial	Herb		8655
<i>Cyperus articulatus</i> L.	Terrestrial	Herb		8701
<i>Cyperus compressus</i> L.	Terrestrial	Herb		8765
<i>Cyperus corymbosus</i> Rottb.	Terrestrial	Herb		8800
<i>Cyperus cyperoides</i> (L.) Kuntze	Marshy	Herb		8834
<i>Cyperus difformis</i> L.	Terrestrial	Herb		8883
<i>Cyperus digitatus</i> Roxb.	Terrestrial	Herb		10491
<i>Cyperus exaltatus</i> Retz.	Marshy	Herb		8960
<i>Cyperus iria</i> L.	Marshy	Herb		9084
<i>Cyperus kyllingiella</i> Larridon	Marshy	Herb		10289
<i>Cyperus laevigatus</i> L.	Marshy	Herb		9131
<i>Cyperus leucocephalus</i> Retz.	Marshy	Herb		9165
<i>Cyperus michelianus</i> (L.) Delile	Terrestrial	Herb		9320
<i>Cyperus nutans</i> var. <i>eleusinoides</i> (Kunth) Haines	Marshy	Herb		8918
<i>Cyperus pilosus</i> Vahl	Marshy	Herb		10516
<i>Cyperus rotundus</i> L.	Marshy	Herb		9333
<i>Cyperus squarrosus</i> L.	Marshy	Herb		9434
<i>Eleocharis atropurpurea</i> (Retz.) J. & C. Presl	Marshy	Herb		9587
<i>Eleocharis geniculata</i> (L.) Roem. & Schult.	Terrestrial	Herb		9672
<i>Eleocharis spiralis</i> (Rottb.) Roem. & Schult.	Marshy	Herb		9656
<i>Fimbristylis aestivalis</i> Vahl	Marshy	Herb		9716
<i>Fimbristylis bisumbellata</i> (Forssk.) Bubani	Marshy	Herb		9757
<i>Fimbristylis complanata</i> (Retz.) Link	Marshy	Herb		9767
<i>Fimbristylis cymosa</i> R. Br.	Marshy	Herb		9783
<i>Fimbristylis dichotoma</i> (L.) Vahl	Marshy	Herb		9820
<i>Fimbristylis ferruginea</i> (L.) Vahl	Marshy	Herb		9882
<i>Fimbristylis lawiana</i> (Boeck.) J. Kern	Marshy	Herb		9831
<i>Fimbristylis ovata</i> (Burm. f.) J. Kern	Marshy	Herb		9939
<i>Fimbristylis quinquangularis</i> (Vahl) Kunth	Marshy	Herb		9996
<i>Fimbristylis schoenoides</i> (Retz.) Vahl	Marshy	Herb		10038
<i>Fimbristylis tenera</i> Schult.	Marshy	Herb		10068
<i>Fimbristylis tetragona</i> R. Br.	Marshy	Herb		10081
<i>Fimbristylis woodrowii</i> C. B. Cl.	Marshy	Herb	Endemic	10104
<i>Fuirena cuspidata</i> (Roth) Kunth	Marshy	Herb		10135
<i>Kyllinga brevifolia</i> Rottb.	Terrestrial	Herb		8728
<i>Kyllinga pumila</i> Michx.	Marshy	Herb		9525
<i>Kyllinga squamulata</i> Thonn. ex Vahl	Marshy	Herb		10512
<i>Lipocarpa squarrosa</i> (L.) Goetgh.	Marshy	Herb		10350
<i>Pycneus diaphanus</i> (Schrud. ex Roem. & Schult.) Hooper & T. Koyama	Terrestrial	Herb		9140
<i>Pycneus flavescens</i> (L.) P. Beauv. ex Rchb.	Marshy	Herb		9016
<i>Pycneus flavidus</i> (Retz.) T. Koyama	Marshy	Herb		9036
<i>Pycneus macrostachyos</i> (Lam.) J. Raynal	Marshy	Herb		10479
<i>Pycneus malabaricus</i> C. B. Cl.	Marshy	Herb		9178
<i>Pycneus pumilus</i> (L.) Nees	Terrestrial	Herb		9362
<i>Pycneus sanguinolentus</i> (Vahl.) Nees	Marshy	Herb		6366

TABLE 1. Continued.

SPECIES/FAMILY	HABITAT	HABIT	ENDEMISM	AHMA NUMBER
<i>Queenslandiella hyalina</i> (Vahl) Ballard	Marshy	Herb		9080
<i>Rhynchospora wightiana</i> (Nees) Steud.	Marshy	Herb		10454
<i>Schoenoplectiella articulata</i> (L.) Lye	Marshy	Herb		10183
<i>Schoenoplectiella roylei</i> (Nees) Lye	Marshy	Herb		10325
<i>Schoenoplectiella supina</i> (L.) Lye	Marshy	Herb		10357
<i>Schoenoplectus corymbosus</i> (Roth. ex Roem. & Schult.) J. Raynal	Marshy	Herb		10224
<i>Schoenoplectiella mucronata</i> (L.) J.Jung & H.K.Choi	Marshy	Herb		10304
Dilleniaceae				
<i>Dillenia pentagyna</i> Roxb.	Terrestrial	Tree		59
Dioscoreaceae				
<i>Dioscorea bulbifera</i> L.	Terrestrial	Climber		7876
<i>Dioscorea oppositifolia</i> L.	Terrestrial	Climbing Shrub		7919
<i>Dioscorea pentaphylla</i> L.	Terrestrial	Climber		7932
Droseraceae				
<i>Drosera indica</i> L.	Terrestrial	Herb		2949
Ebenaceae				
<i>Diospyros montana</i> Roxb.	Terrestrial	Tree		4566
Elaeagnaceae				
<i>Elaeagnus conferta</i> Roxb.	Terrestrial	Shrub		6931
Elatinaceae				
<i>Bergia ammannioides</i> Roxb. ex Roth	Terrestrial	Herb		358
Eriocaulaceae				
<i>Eriocaulon eurypeplon</i> Korn.	Marshy	Herb	Endemic	8529
<i>Eriocaulon heterolepis</i> Steud.	Marshy	Herb	Endemic	8346
<i>Eriocaulon minutum</i> Hook. f.	Terrestrial	Herb	Endemic	8401
<i>Eriocaulon ritchieanum</i> Ruhl.	Marshy	Herb	Endemic	8432
<i>Eriocaulon sedgwickii</i> Fyson	Marshy	Herb	Endemic	8460
<i>Eriocaulon xeranthemum</i> Mart.	Marshy	Herb		8536
Euphorbiaceae				
<i>Acalypha ciliata</i> Frossk.	Terrestrial	Herb		7019
<i>Acalypha indica</i> L.	Terrestrial	Herb		13194
<i>Acalypha malabarica</i> Muell. Arg.	Terrestrial	Herb		7034
<i>Chrozophora plicata</i> (Vahl) A. Juss. ex Spreng.	Terrestrial	Herb		7093
<i>Chrozophora rottleri</i> (Geiseler) A. Juss. ex Spreng.	Terrestrial	Herb		7103
<i>Dimorphocalyx glabellus</i> var. <i>lawianus</i> (Hook. f.) Chakrab. & N.P.Balacr.	Terrestrial	Tree	Endemic	7115
<i>Euphorbia heyneana</i> Spr.	Terrestrial	Herb		7167
<i>Euphorbia hirta</i> L.	Terrestrial	Herb		7152
<i>Euphorbia parviflora</i> L.	Terrestrial	Herb		7082
<i>Euphorbia rothiana</i> Spreng.	Terrestrial	Herb		7164
<i>Euphorbia thymifolia</i> L.	Terrestrial	Herb		7177
<i>Falconeria insignis</i> Royle	Terrestrial	Tree		7296
<i>Homonoia riparia</i> Lour.	Terrestrial	Shrub		7206
<i>Macaranga peltata</i> (Roxb.) Muell. Arg.	Terrestrial	Tree		7244
<i>Mallotus philippensis</i> (Lamk.) Muell. Arg.	Terrestrial	Tree		7251
<i>Mallotus resinusus</i> (Blanco) Merr.	Terrestrial	Shrub	Endemic	16766
<i>Tragia plukenetii</i> Radcl.-Sm.	Terrestrial	Climber		7312
<i>Tragia praetervisiva</i> Chakrab. & N. P. Balacr.	Terrestrial	Climber		7317
Gentianaceae				
<i>Canscora diffusa</i> (Vahl.) R. Br. ex Roem. & Schult.	Terrestrial	Herb		21526
<i>Centaurium pulchellum</i> var. <i>altaicum</i> (Griseb.) Kitag. & H.Hara	Terrestrial	Herb		4927
<i>Exacum pedunculatum</i> L.	Terrestrial	Herb		4945
<i>Exacum petiolare</i> Griseb.	Terrestrial	Herb		4954
<i>Hoppea dichotoma</i> Willd.	Terrestrial	Herb		4967
<i>Swertia densifolia</i> (Griseb.) Kashyapa	Terrestrial	Herb	Endemic	4987
<i>Swertia minor</i> Knobl.	Terrestrial	Herb	Endemic	4998
Gesneriaceae				
<i>Rhynchosyris obliquum</i> Blume	Marshy	Herb		5779
Hydrocharitaceae				
<i>Nechamandra alternifolia</i> (Roxb. ex Wight) Thwaites	Aquatic	Herb		15753
Hydroleaceae				
<i>Hydrolea zeylanica</i> (L.) Vahl.	Aquatic	Herb		5010
Hypoxidaceae				
<i>Curculigo orchioides</i> Gaertn.	Terrestrial	Herb		7813
<i>Hypoxis aurea</i> Lour.	Terrestrial	Herb		7826

TABLE 1. Continued.

SPECIES/FAMILY	HABITAT	HABIT	ENDEMISM	AHMA NUMBER
ICACINACEAE				
<i>Nothapodytes nimmoniana</i> (J. Grah.) Mabberley	Terrestrial	Tree		1043
LAMIACEAE				
<i>Anisochilus carnosus</i> (L.f.) Wall.	Terrestrial	Herb		6307
<i>Anisomeles heyneana</i> Benth.	Terrestrial	Herb		6319
<i>Anisomeles indica</i> (L.) Kuntze	Terrestrial	Undershrub	Endemic	6324
<i>Colebrookea oppositifolia</i> Sm.	Terrestrial	Shrub		6334
<i>Hyptis suaveolens</i> (L.) Poit.	Terrestrial	Undershrub		
<i>Isodon lophanthoides</i> (Buch.-Ham. ex D. Don) H. Hara	Terrestrial	Herb		6503
<i>Lavandula bipinnata</i> (Roth) Kuntze	Terrestrial	Herb		6371
<i>Lavandula gibsonii</i> J. Graham	Terrestrial	Herb	Endemic	6385
<i>Leucas biflora</i> (Vahl) Sm.	Terrestrial	Herb		6396
<i>Leucas ciliata</i> Benth.	Terrestrial	Herb		6406
<i>Leucas decemdentata</i> (Willd.) Sm.	Terrestrial	Herb		6429
<i>Leucas martinicensis</i> (Jacq.) R. Br.	Terrestrial	Herb		6417
<i>Leucas montana</i> (Roth) Spr.	Terrestrial	Herb		6425
<i>Leucas zeylanica</i> (L.) W.T.Aiton	Terrestrial	Herb		6410
<i>Ocimum gratissimum</i> L.	Terrestrial	Undershrub		6477
<i>Platostoma hispidum</i> (L.) A. J. Paton	Terrestrial	Herb		6304
<i>Plectranthus barbatus</i> Andr.	Terrestrial	Herb		6340
<i>Pogostemon plectrantoides</i> Desf.	Terrestrial	Undershrub		6515
<i>Pogostemon purpurascens</i> Dalz.	Terrestrial	Herb	Endemic	6527
<i>Pogostemon stellatus</i> (Lour.) Kuntze	Terrestrial	Herb		6350
<i>Premna serratifolia</i> L.	Terrestrial	Shrub		17548
<i>Rothea serrata</i> (L.) Steane & Mabb.	Terrestrial	Shrub		
<i>Salvia plebeia</i> R. Br.	Terrestrial	Herb		6546
<i>Vitex negundo</i> L.	Terrestrial	Tree		6295
LAURACEAE				
<i>Actinodaphne gullavara</i> (Buch.-Ham. ex Nees) M.R.Almeida	Terrestrial	Tree		17992
<i>Cinnamomum verum</i> J. Presl	Terrestrial	Tree		6898
<i>Litsea deccanensis</i> Gamble	Terrestrial	Tree		6909
LECYTHIDACEAE				
<i>Careya arborea</i> Roxb.	Terrestrial	Tree		3095
LEGUMINOSAE				
<i>Abrus precatorius</i> L.	Terrestrial	Climber		6932
<i>Acacia caesia</i> (L.) Willd.	Terrestrial	Climbing Shrub		2835
<i>Acacia catechu</i> (L. f.) Willd.	Terrestrial	Tree		11188
<i>Acacia chundra</i> (Rotl.) Willd.	Terrestrial	Tree		12501
<i>Acacia concinna</i> (Willd.) DC.	Terrestrial	Climbing Shrub		18203
<i>Acacia farnesiana</i> (L.) Willd.	Terrestrial	Shrub		18193
<i>Acacia nilotica</i> (L.) Delile	Terrestrial	Tree		12816
<i>Acacia pennata</i> (L.) Willd.	Terrestrial	Scandent Shrub		12497
<i>Aeschynomene indica</i> L.	Terrestrial	Undershrub		1355
<i>Alysicarpus hamosus</i> Edgew.	Terrestrial	Herb		16721
<i>Alysicarpus heyneanus</i> var. <i>ludens</i> (Baker) A. Pramanik & Thoth.	Terrestrial	Herb		1397
<i>Butea monosperma</i> (Lam.) Taub.	Terrestrial	Tree		12836
<i>Butea superba</i> Roxb.	Terrestrial	Climber		
<i>Caesalpinia bonduc</i> (L.) Roxb.	Terrestrial	Scandant Shrub		2423
<i>Cajanus lineatus</i> (Wight & Arn.) Maesen	Terrestrial	Shrub	Endemic	1439
<i>Cajanus scarabaeoides</i> (L.) Thours	Terrestrial	Herb		1451
<i>Cajanus sericeus</i> (Baker) Maesen	Terrestrial	Shrub	Endemic	1465
<i>Cassia fistula</i> L.	Terrestrial	Tree		2502
<i>Chamaecrista mimosoides</i> (L.) Greene.	Terrestrial	Herb		2554
<i>Chamaecrista pumila</i> (Lam.) K.Larsen	Terrestrial	Herb		2539
<i>Crotalaria albida</i> Heyne ex Roth	Terrestrial	Herb		1480
<i>Crotalaria calycina</i> Schrank	Terrestrial	Herb		1495
<i>Crotalaria clavata</i> Wight & Arn.	Terrestrial	Shrub		28048
<i>Crotalaria filipes</i> Benth.	Terrestrial	Herb	Endemic	1497
<i>Crotalaria filipes</i> var. <i>trichophora</i> (Benth. ex Baker) T. Cooke	Terrestrial	Herb	Endemic	1505
<i>Crotalaria hebecarpa</i> (DC.) Rudd	Terrestrial	Herb		1837
<i>Crotalaria juncea</i> L.	Terrestrial	Herb		1516
<i>Crotalaria linifolia</i> L.f.	Terrestrial	Undershrub		1526
<i>Crotalaria mysorensis</i> Roth	Terrestrial	Herb		1536
<i>Crotalaria nana</i> Burm. f.	Terrestrial	Herb		1555

TABLE 1. Continued.

SPECIES/FAMILY	HABITAT	HABIT	ENDEMISM	AHMA NUMBER
<i>Crotalaria orixensis</i> Willd.	Terrestrial	Herb		1569
<i>Crotalaria prostrata</i> Willd.	Terrestrial	Herb		1576
<i>Crotalaria retusa</i> L.	Terrestrial	Undershrub		1591
<i>Crotalaria stocksii</i> Baker	Terrestrial	Herb		16717
<i>Cullen corylifolium</i> (L.) Medik.	Terrestrial	Herb		2001
<i>Dalbergia horrida</i> (Dennst.) Mabb.	Terrestrial	Shrub	Endemic	1677
<i>Dalbergia lanceolaria</i> L. f.	Terrestrial	Tree		17652
<i>Dalbergia latifolia</i> Roxb.	Terrestrial	Tree		1660
<i>Dendrolobium triangulare</i> (Retz.) Schindl.	Terrestrial	Shrub		1766
<i>Desmodiastrum belgaumense</i> (Wight) A. Pramanik & Thoth.	Terrestrial	Herb	Endemic	1363
<i>Desmodiastrum racemosum</i> var. <i>rotundifolium</i> (Baker) A. Pramanik & Thoth.	Terrestrial	Herb	Endemic	1762
<i>Desmodium dichotomum</i> (Willd.) DC.	Terrestrial	Herb		1738
<i>Desmodium gangeticum</i> (L.) DC.	Terrestrial	Undershrub		1713
<i>Desmodium laxiflorum</i> DC.	Terrestrial	Undershrub		1745
<i>Desmodium oojeinense</i> (Roxb.) H. Ohashi	Terrestrial	Tree		1967
<i>Desmodium triflorum</i> (L.) DC.	Terrestrial	Herb		1771
<i>Entada rheedii</i> Spreng.	Terrestrial	Climbing Shrub		2893
<i>Erythrina suberosa</i> Roxb.	Terrestrial	Tree		18030
<i>Flemingia strobilifera</i> (L.) Ait.	Terrestrial	Shrub		1813
<i>Geissaspis cristata</i> Wight & Arn.	Terrestrial	Herb		1823
<i>Indigofera cassioides</i> Rottl. ex DC.	Terrestrial	Shrub		1863
<i>Indigofera cordifolia</i> Roth	Terrestrial	Herb		22175
<i>Indigofera glandulosa</i> var. <i>sykesii</i> Griff. ex Baker	Terrestrial	Herb	Endemic	1881
<i>Indigofera linifolia</i> (L.f.) Retz.	Terrestrial	Herb		1896
<i>Indigofera trita</i> L. f.	Terrestrial	Undershrub		1928
<i>Indigofera wightii</i> Wight & Arn.	Terrestrial	Undershrub		18080
<i>Melilotus indicus</i> (L.) All.	Terrestrial	Herb		1953
<i>Mimosa pudica</i> L.	Terrestrial	Herb		2903
<i>Mucuna monosperma</i> DC. ex Wight	Terrestrial	Climber		1957
<i>Paracalyx scariosus</i> (Roxb.) Ali	Terrestrial	Climber		1969
<i>Parkinsonia aculeata</i> L.	Terrestrial	Shrub		2736
<i>Peltophorum pterocarpum</i> (DC.) K. Heyne	Terrestrial	Tree		2779
<i>Prosopis cineraria</i> (L.) Druce	Terrestrial	Tree		2912
<i>Pseudarthria viscida</i> (L.) Wight & Arn.	Terrestrial	Undershrub		1999
<i>Pterocarpus marsupium</i> Roxb.	Terrestrial	Tree		2010
<i>Pueraria tuberosa</i> (Willd.) DC.	Terrestrial	Climbing Shrub		2012
<i>Rhynchosia minima</i> (L.) DC.	Terrestrial	Herb		2017
<i>Rhynchosia rothii</i> Ait.	Terrestrial	Climbing Shrub		2025
<i>Saraca asoca</i> (Roxb.) Willd.	Terrestrial	Tree		2802
<i>Senna auriculata</i> (L.) Roxb.	Terrestrial	Shrub		21633
<i>Senna surattensis</i> (Burm.f.) H.S.Irwin & Barneby	Terrestrial	Tree		2659
<i>Senna tora</i> (L.) Roxb.	Terrestrial	Herb		2681
<i>Sesbania bispinosa</i> (Jacq.) W. Wight	Terrestrial	Undershrub		2026
<i>Smithia bigemina</i> Dalz.	Terrestrial	Herb	Endemic	16728
<i>Smithia conferta</i> Sm.	Marshy	Herb		2060
<i>Smithia hirsuta</i> Dalz.	Terrestrial	Herb	Endemic	2054
<i>Smithia laxiflora</i> Wight & Arn.	Terrestrial	Herb		2096
<i>Smithia purpurea</i> Hook.	Terrestrial	Herb	Endemic	2080
<i>Smithia sensitiva</i> Ait.	Marshy	Herb		18165
<i>Smithia setulosa</i> Dalz.	Terrestrial	Herb	Endemic	2105
<i>Tadehagi triquetrum</i> (L.) H. Ohashi	Terrestrial	Undershrub		1774
<i>Tephrosia coccinea</i> Wall.	Terrestrial	Undershrub	Endemic	2118
<i>Tephrosia tinctoria</i> Pers.	Terrestrial	Undershrub		2129
<i>Teramnus labialis</i> (L.f.) Spreng.	Terrestrial	Herb		5154
<i>Vigna aconitifolia</i> (Jacq.) Marechal	Terrestrial	Herb		1982
<i>Vigna vexillata</i> (L.) A. Rich.	Terrestrial	Climber	Endemic	2177
Lentibulariaceae				
<i>Utricularia reticulata</i> Sm.	Marshy	Herb		5758
Linaceae				
<i>Linum mysurense</i> Heyne ex Benth.	Terrestrial	Herb		752
<i>Reinwardtia indica</i> Dum.	Terrestrial	Undershrub		764
Linderniaceae				
<i>Lindernia ciliata</i> (Colsm.) Penn.	Terrestrial	Herb		5531
<i>Lindernia crustacea</i> (L.) F. Muell.	Marshy	Herb		5538

TABLE 1. Continued.

SPECIES/FAMILY	HABITAT	HABIT	ENDEMISM	AHMA NUMBER
<i>Lindernia nummulariifolia</i> (D. Don) Wettst.	Marshy	Herb		5555
<i>Lindernia oppositifolia</i> (L.) Mukherjee	Marshy	Herb		5556
<i>Lindernia parviflora</i> (Roxb.) Haines	Marshy	Herb		5562
<i>Torenia indica</i> Sald.	Terrestrial	Herb	Endemic	5679
Loranthaceae				
<i>Dendrophthoe falcata</i> (L. f.) Etting	Parasitic	Climbing Shrub		6936
<i>Macrosolen capitellatus</i> (Wight & Arn.) Danser	Parasitic	Shrub		6939
<i>Taxillus cuneatus</i> Danser	Parasitic	Shrub		6948
Lythraceae				
<i>Ammannia aegyptiaca</i> Willd.	Marshy	Herb		3142
<i>Ammannia baccifera</i> L.	Marshy	Herb		3124
<i>Lagerstroemia microcarpa</i> Wight	Terrestrial	Tree	Endemic	3169
<i>Rotala densiflora</i> (Roth) Koehne	Terrestrial	Herb		3181
<i>Rotala floribunda</i> Koehne	Terrestrial	Herb	Endemic	3131
<i>Rotala serpyllifolia</i> (Roth) Bremek.	Terrestrial	Herb		3197
<i>Woodfordia fruticosa</i> (L.) Kurz	Terrestrial	Shrub		3209
Malpighiaceae				
<i>Aspidopterys cordata</i> (Heyne ex Wall.) A. Juss.	Terrestrial	Climber	Endemic	768
<i>Hiptage benghalensis</i> (L.) Kurz	Terrestrial	Climbing Shrub		780
Malvaceae				
<i>Abelmoschus manihot</i> (L.) Medik.	Terrestrial	Undershrub	Endemic	386
<i>Abutilon indicum</i> (L.) Sweet	Terrestrial	Undershrub		13192
<i>Abutilon pannosum</i> (G.Forst.) Schltld.	Terrestrial	Undershrub		398
<i>Abutilon persicum</i> (Burm. f.) Merr.	Terrestrial	Undershrub		399
<i>Bombax ceiba</i> L.	Terrestrial	Tree		538
<i>Corchorus olitorius</i> L.	Terrestrial	Herb		623
<i>Corchorus trilocularis</i> L.	Terrestrial	Herb		636
<i>Erinocarpus nimmonii</i> Grah.	Terrestrial	Tree	Endemic	641
<i>Eriolaena quinquelocularis</i> (Wight & Arn.) Wight	Terrestrial	Tree	Endemic	553
<i>Grewia hirsuta</i> Vahl	Terrestrial	Shrub		669
<i>Grewia nervosa</i> (Lour.) Panigr.	Terrestrial	Shrub		676
<i>Grewia serrulata</i> DC.	Terrestrial	Tree		654
<i>Grewia tiliifolia</i> Vahl	Terrestrial	Shrub		696
<i>Helicteres isora</i> L.	Terrestrial	Shrub		559
<i>Hibiscus lobatus</i> (J. A. Murr.) Kuntze	Terrestrial	Herb		412
<i>Kavalama urens</i> (Roxb.) Raf.	Terrestrial	Tree		591
<i>Kydia calycina</i> Roxb.	Terrestrial	Tree		444
<i>Malvastrum coromandelianum</i> (L.) Garcke	Terrestrial	Herb		459
<i>Sida acuta</i> Burm. f.	Terrestrial	Undershrub		13863
<i>Sterculia guttata</i> Roxb. ex G. Don	Terrestrial	Tree		583
<i>Thespesia lampas</i> (Cav.) Dalz..	Terrestrial	Shrub		494
<i>Thespesia populnea</i> (L.) Soland. ex Corr.	Terrestrial	Tree		501
<i>Triumfetta annua</i> L.	Terrestrial	Herb		14420
<i>Triumfetta bogotensis</i> DC.	Terrestrial	Herb		16697
<i>Triumfetta malebarica</i> J.Konig ex Rottb.	Terrestrial	Herb		737
<i>Triumfetta rhomboidea</i> Jacq.	Terrestrial	Herb		14476
<i>Urena lobata</i> L.	Terrestrial	Shrub		503
Martyniaceae				
<i>Martynia annua</i> L.	Terrestrial	Herb		5810
Melastomataceae				
<i>Memecylon talbotianum</i> Brandis	Terrestrial	Tree	Endemic	3099
<i>Memecylon umbellatum</i> Burm. f.	Terrestrial	Tree		3106
<i>Osbeckia muralis</i> Naud.	Terrestrial	Herb		3113
Meliaceae				
<i>Cipadessa baccifera</i> (Roth) Miq.	Terrestrial	Shrub		1007
<i>Dysoxylum gotadhora</i> (Buch.-Ham.) Mabb.	Terrestrial	Tree		1009
<i>Melia azedarach</i> L.	Terrestrial	Tree		1010
<i>Trichilia connaroides</i> var. <i>connaroides</i>	Terrestrial	Tree		1019
<i>Turraea pubescens</i> Hell.	Terrestrial	Shrub		1025
Menispermaceae				
<i>Stephania japonica</i> (Thunb.) Miers	Terrestrial	Climbing Shrub		141
Molluginaceae				
<i>Glinus lotoides</i> L.	Terrestrial	Herb		3363
<i>Mollugo pentaphylla</i> L.	Terrestrial	Herb		3367

TABLE 1. Continued.

SPECIES/FAMILY	HABITAT	HABIT	ENDEMISM	AHMA NUMBER
Moraceae				
<i>Ficus arnottiana</i> (Miq.) Miq.	Terrestrial	Tree		7454
<i>Ficus exasperata</i> Vahl	Terrestrial	Tree		7474
<i>Ficus tinctoria</i> subsp. <i>gibbosa</i> (Blume) Corner	Epiphytic	Shrub		17237
Myrtaceae				
<i>Fabricia pubescens</i> (Law) Kuntze	Terrestrial	Herb		1392
<i>Syzygium cumini</i> (L.) Skeels	Terrestrial	Tree		3073
<i>Syzygium salicifolium</i> (Wight) J. Graham	Terrestrial	Tree		3074
Nyctaginaceae				
<i>Boerhavia repens</i> L.	Terrestrial	Herb		
Olacaceae				
<i>Olex imbricata</i> Roxb.	Terrestrial	Climber		1039
Oleaceae				
<i>Chionanthus mala-elengi</i> (Dennst.) P. S. Green.	Terrestrial	Tree		4604
<i>Jasminum malabaricum</i> Wight	Terrestrial	Climbing Shrub	Endemic	4583
<i>Jasminum multiflorum</i> (Burm. f.) Andr.	Terrestrial	Shrub		4588
<i>Ligustrum perrottetii</i> A. DC.	Terrestrial	Tree	Endemic	4599
Onagraceae				
<i>Ludwigia octovalvis</i> (Jacq.) P. H. Raven	Terrestrial	Herb		3229
<i>Ludwigia perennis</i> L.	Terrestrial	Herb		3242
Orchidaceae				
<i>Aerides maculosa</i> Lindl.	Epiphytic	Herb	Endemic	7564
<i>Cheirostylis flabellata</i> Wight	Terrestrial	Herb		7571
<i>Conchidium filiforme</i> (Wight) Rauschert	Epiphytic	Herb	Endemic	7591
<i>Crepidium resupinatum</i> (G. Forst.) Szlach.	Terrestrial	Herb		7714
<i>Dendrobium aqueum</i> Lindl.	Epiphytic	Herb	Endemic	7573
<i>Dendrobium barbatulum</i> Lindl.	Epiphytic	Herb	Endemic	7579
<i>Dendrobium crepidatum</i> Lindl. & Paxton	Epiphytic	Herb	Endemic	7581
<i>Dendrobium microbulbon</i> A. Rich.	Epiphytic	Herb	Endemic	7584
<i>Habenaria brachyphylla</i> (Lindl.) Aitch.	Terrestrial	Herb	Endemic	7605
<i>Habenaria digitata</i> Lindl.	Terrestrial	Herb		7621
<i>Habenaria foliosa</i> A. Rich.	Terrestrial	Herb	Endemic	7624
<i>Habenaria grandifloriformis</i> Blatt. & McC.	Terrestrial	Herb		7633
<i>Habenaria heyneana</i> Lindl.	Terrestrial	Herb	Endemic	7648
<i>Habenaria marginata</i> Colebr.	Terrestrial	Herb		7664
<i>Habenaria rariflora</i> A. Rich.	Terrestrial	Herb	Endemic	7684
<i>Habenaria stocksii</i> Hook. f.	Terrestrial	Herb	Endemic	7731
<i>Oberonia recurva</i> Lindl.	Epiphytic	Herb		7724
<i>Smithsonia viridiflora</i> (Dalzell) C. J. Saldanha	Epiphytic	Herb	Endemic	7740
<i>Vanda testacea</i> (Lindl.) Reichb. f.	Epiphytic	Herb		7747
Orobanchaceae				
<i>Aeginetia indica</i> L.	Parasitic	Herb		5741
<i>Buchnera hispida</i> Buch.-Ham. ex D. Don	Terrestrial	Herb		5468
<i>Centranthera indica</i> (L.) Gamble	Terrestrial	Herb		5477
<i>Christisonia calcarata</i> Wight	Parasitic	Herb		5742
<i>Christisonia lawii</i> Wight	Parasitic	Herb		5743
<i>Rhamphicarpa fistulosa</i> (Hochst.) Benth.	Terrestrial	Herb	Endemic	5586
<i>Sopubia delphinifolia</i> G. Don	Marshy	Herb		5602
<i>Striga angustifolia</i> (D. Don) Sald.	Parasitic	Herb		5637
<i>Striga densiflora</i> (Benth.) Benth.	Parasitic	Herb		5631
<i>Striga gesnerioides</i> (Willd.) Vatke	Parasitic	Herb		5645
Oxalidaceae				
<i>Biophytum sensitivum</i> (L.) DC.	Terrestrial	Herb		807
<i>Oxalis corniculata</i> L.	Terrestrial	Herb		813
Pedaliaceae				
<i>Sesamum indicum</i> L.	Terrestrial	Herb		5813
Phrymaceae				
<i>Mimulus strictus</i> Benth.	Terrestrial	Herb		5572
Phyllanthaceae				
<i>Breynia retusa</i> (Dennst.) Alston	Terrestrial	Shrub		
<i>Bridelia retusa</i> (L.) A. Juss.	Terrestrial	Tree		7063
<i>Flueggea virosa</i> (Roxb. ex Willd.) Royle	Terrestrial	Shrub		7310
<i>Glochidion ellipticum</i> Wight	Terrestrial	Tree	Endemic	7191
<i>Phyllanthus emblica</i> L.	Terrestrial	Tree		7117

TABLE 1. Continued.

SPECIES/FAMILY	HABITAT	HABIT	ENDEMISM	AHMA NUMBER
<i>Phyllanthus reticulatus</i> Poir.	Terrestrial	Shrub		7238
<i>Phyllanthus urinaria</i> L.	Terrestrial	Herb		7283
Piperaceae				
<i>Piper trichostachyon</i> (Miq.) C. B. Cl.	Terrestrial	Climber	Endemic	6866
Pittosporaceae				
<i>Pittosporum wightii</i> A. K. Mukherjee	Terrestrial	Tree		281
Plantaginaceae				
<i>Bacopa monnieri</i> (L.) Wettst.	Marshy	Herb		5453
<i>Kickxia incana</i> (Wall.) Pennell	Lithophytic	Herb		5517
<i>Limnophila indica</i> (L.) Druce	Marshy	Herb		5504
<i>Limnophila sessiliflora</i> (Vahl) Blume	Marshy	Herb		5493
<i>Lindenbergia muraria</i> (Roxb. ex D. Don) Bruhl	Terrestrial	Herb		5523
<i>Scoparia dulcis</i> L.	Terrestrial	Herb		5595
<i>Stemodia viscosa</i> Roxb.	Terrestrial	Herb		5619
<i>Veronica anagallis-aquatica</i> L.	Terrestrial	Herb		5705
Plumbaginaceae				
<i>Plumbago zeylanica</i> L.	Terrestrial	Shrub		4502
Poaceae				
<i>Acrachne racemosa</i> (Heyne ex Roth) Ohwi	Terrestrial	Herb		10840
<i>Aristida adscensionis</i> L.	Terrestrial	Herb		11051
<i>Aristida redacta</i> Stapf	Terrestrial	Herb	Endemic	10860
<i>Arthraxon echinatus</i> (Nees) Hochst.	Terrestrial	Herb		10867
<i>Arthraxon hispidus</i> (Thunb.) Makino	Terrestrial	Herb		14477
<i>Arthraxon meeboldii</i> Stapf	Terrestrial	Herb	Endemic	10933
<i>Arthraxon villosus</i> C. E. C. Fisch.	Terrestrial	Herb	Endemic	10973
<i>Arundinella metzii</i> Hochst. ex Miq.	Terrestrial	Herb	Endemic	11017
<i>Arundinella nepalensis</i> Trin.	Terrestrial	Herb		11019
<i>Arundinella pumila</i> (Hochst.) Steud.	Terrestrial	Herb		11020
<i>Arundinella setosa</i> Trin.	Terrestrial	Herb		11029
<i>Arundo donax</i> L.	Terrestrial	Herb		11047
<i>Capillipedium huegelii</i> (Hack.) A. Camus	Terrestrial	Herb	Endemic	11071
<i>Chionachne gigantea</i> (J. Koenig) Veldkamp	Terrestrial	Herb		11082
<i>Chrysopogon fulvus</i> (Spr.) Chiov.	Terrestrial	Herb		11096
<i>Coix lacryma-jobi</i> L.	Aquatic	Herb		11104
<i>Dactyloctenium aegyptium</i> (L.) Willd.	Terrestrial	Herb		11132
<i>Dichanthium caricosum</i> (L.) A. Camus	Terrestrial	Herb		11149
<i>Digitaria ciliaris</i> (Retz.) Koel.	Terrestrial	Herb		11159
<i>Dimeria gracilis</i> Nees ex Steud.	Terrestrial	Herb		11165
<i>Dinebra retroflexa</i> (Vahl) Panz.	Terrestrial	Herb		11171
<i>Echinochloa colona</i> (L.) Link	Terrestrial	Herb		11175
<i>Eragrostis ciliaris</i> (L.) R. Br.	Terrestrial	Herb		11205
<i>Eragrostis gangetica</i> (Roxb.) Steud.	Terrestrial	Herb		11210
<i>Eragrostis nigra</i> Nees. ex Steud.	Marshy	Herb		11211
<i>Eragrostis unioides</i> (Retz.) Nees. ex Steud.	Terrestrial	Herb		11223
<i>Eulalia trispicata</i> (Schult.) Henr.	Terrestrial	Herb		11244
<i>Eulaliopsis binata</i> (Retz.) C. E. Hubb.	Terrestrial	Herb		11248
<i>Garnotia courtallensis</i> (Arn. & Nees.) Thw.	Terrestrial	Herb		11249
<i>Hackelochloa granularis</i> (L.) Kuntze	Terrestrial	Herb		24189
<i>Heteropogon ritchiei</i> (Hook. f.) Blatt. & McC.	Terrestrial	Herb	Endemic	11263
<i>Heteropogon triticeus</i> (R. Br.) Stapf ex Craib	Terrestrial	Herb		11264
<i>Imperata cylindrica</i> (L.) Rausch.	Terrestrial	Herb		21519
<i>Isachne elegans</i> Dalz.	Terrestrial	Herb	Endemic	11269
<i>Isachne gracilis</i> C. E. Hubb.	Terrestrial	Herb	Endemic	11272
<i>Isachne lisboae</i> Hook. f.	Terrestrial	Herb		11273
<i>Isachne globosa</i> (Thunb.) Kuntze	Terrestrial	Herb		11277
<i>Ischaemum afrum</i> (J. F. Gmel.) Dandy	Terrestrial	Herb		11292
<i>Ischaemum commutatum</i> Hack.	Marshy	Herb		11282
<i>Ischaemum molle</i> Hook. f.	Terrestrial	Herb	Endemic	11290
<i>Ischaemum ritchiei</i> Stapf ex Bor	Terrestrial	Herb	Endemic	11293
<i>Ischaemum tumidum</i> Stapf ex Bor	Terrestrial	Herb	Endemic	11307
<i>Iseilema antheboroides</i> Hack.	Terrestrial	Herb	Endemic	11323
<i>Iseilema laxum</i> Hack.	Terrestrial	Herb		11324
<i>Microchloa indica</i> (L. f.) P. Beauv.	Terrestrial	Herb		13536
<i>Ophiuros exaltatus</i> (L.) Kuntze	Terrestrial	Herb		11343

TABLE 1. Continued.

SPECIES/FAMILY	HABITAT	HABIT	ENDEMISM	AHMA NUMBER
<i>Oplismenus burmannii</i> (Retz.) P. Beauv.	Terrestrial	Herb		11345
<i>Oplismenus compositus</i> (L.) Beauv.	Terrestrial	Herb		11347
<i>Panicum maximum</i> Jacq.	Terrestrial	Herb		11358
<i>Panicum sumatrense</i> Roth	Terrestrial	Herb		11361
<i>Paspalum canarae</i> (Steud.) Veldk.	Terrestrial	Herb		11372
<i>Pseudanthistiria heteroclita</i> (Roxb.) Hook. f.	Terrestrial	Herb		11382
<i>Saccharum spontaneum</i> L.	Marshy	Herb		11390
<i>Sehima nervosum</i> (Rottl.) Stapf	Terrestrial	Herb		11394
<i>Setaria pumila</i> (Poir.) Roem. & Schult.	Terrestrial	Herb		11395
<i>Sorghum halepense</i> (L.) Pers.	Terrestrial	Herb		11402
<i>Sorghum purpureosericeum</i> (A. Rich.) Schweinf. & Asch.	Terrestrial	Herb		11405
<i>Spodiopogon rhizophorus</i> (Steud.) Pilger	Terrestrial	Herb	Endemic	11408
<i>Sporobolus piliferus</i> (Trin.) Kunth	Terrestrial	Herb		11412
<i>Themeda quadrivalvis</i> (L.) Kuntze	Terrestrial	Herb		11416
<i>Trilobachne cookei</i> (Stapf) Schenck ex Henr.	Terrestrial	Herb	Endemic	11426
<i>Tripogon bromoides</i> Roth	Terrestrial	Herb		11438
Polygalaceae				
<i>Polygala arvensis</i> Willd.	Terrestrial	Herb		284
<i>Polygala persicariifolia</i> DC.	Terrestrial	Herb		323
Polygonaceae				
<i>Persicaria barbata</i> (L.) Hara	Terrestrial	Herb		6774
<i>Persicaria barbata</i> var. <i>gracilis</i> (Danser) Hara	Terrestrial	Herb		6772
<i>Persicaria glabra</i> (Willd.) Gomez	Marshy	Herb		21520
<i>Persicaria nepalensis</i> (Meissn.) H. Gross.	Terrestrial	Herb		6766
<i>Persicaria decipiens</i> (R.Br.) K.L.Wilson	Terrestrial	Herb		6775
<i>Polygonum plebeium</i> R. Br.	Terrestrial	Herb		6805
<i>Polygonum praetermissum</i> Hook. f.	Terrestrial	Undershrub		6784
<i>Rumex dentatus</i> L.	Terrestrial	Herb		6815
Potamogetonaceae				
<i>Potamogeton crispus</i> L.	Aquatic	Herb		15794
Primulaceae				
<i>Anagallis arvensis</i> L.	Terrestrial	Herb		4512
Ranunculaceae				
<i>Clematis gouriana</i> Roxb. ex DC.	Terrestrial	Climber		3
<i>Clematis hedysarifolia</i> DC.	Terrestrial	Climber		15
<i>Clematis hirsuta</i> Guill. & Perr.	Terrestrial	Climber		25
<i>Thalictrum dalzellii</i> Hook.	Terrestrial	Herb	Endemic	16659
Rhamnaceae				
<i>Scutia myrtina</i> (Burm. f.) Kurz	Terrestrial	Shrub		1082
<i>Ventilago maderaspatana</i> Gaertn.	Terrestrial	Climbing Shrub	Endemic	1086
Rubiaceae				
<i>Catunaregam spinosa</i> (Thunb.) Tirveng.	Terrestrial	Tree		3753
<i>Ceriscoides turgida</i> (Roxb.) Tirveng.	Terrestrial	Tree		3587
<i>Dentella repens</i> (L.) J. R. Forst. & G. Forst.	Terrestrial	Herb		3573
<i>Hymenodictyon obovatum</i> Wall.	Terrestrial	Tree	Endemic	3603
<i>Ixora brachiata</i> Roxb.	Terrestrial	Shrub	Endemic	3603
<i>Ixora nigricans</i> R. Br. ex Wight & Arn.	Terrestrial	Shrub		3617
<i>Mitragyna parvifolia</i> (Roxb.) Korth.	Terrestrial	Tree		3636
<i>Mussaenda glabrata</i> (Hook. f.) Hutch. ex Gamble	Terrestrial	Shrub	Endemic	3652
<i>Neanotis lancifolia</i> (Hook. f.) W. H. Lewis	Terrestrial	Herb	Endemic	3516
<i>Neanotis montholonii</i> (Hook. f.) W. H. Lewis	Terrestrial	Herb	Endemic	3525
<i>Oldenlandia affinis</i> (Roem. & Schult.) DC.	Terrestrial	Herb		3663
<i>Oldenlandia corymbosa</i> L.	Terrestrial	Herb		3691
<i>Oldenlandia herbacea</i> (L.) Roxb.	Terrestrial	Herb		3695
<i>Oxyceros rugulosus</i> (Thw.) Tirveng.	Terrestrial	Tree		3757
<i>Pavetta crassicaulis</i> Bremek.	Terrestrial	Shrub		3723
<i>Psydrax umbellata</i> (Wight) Bridson	Terrestrial	Shrub		3562
<i>Rubia cordifolia</i> L.	Terrestrial	Climber		3767
<i>Spermacoce articularis</i> L. f.	Terrestrial	Herb		3534
<i>Spermacoce pusilla</i> Wall.	Terrestrial	Herb		3546
<i>Spermadictyon suaveolens</i> Roxb.	Terrestrial	Shrub		3596
Rutaceae				
<i>Melicope lunu-ankenda</i> (Gaertn.) T. Hartley	Terrestrial	Tree		13273
<i>Toddalia asiatica</i> (L.) Lam.	Terrestrial	Shrub		961

TABLE 1. Continued.

SPECIES/FAMILY	HABITAT	HABIT	ENDEMISM	AHMA NUMBER
<i>Zanthoxylum rhetsa</i> (Roxb.) DC.	Terrestrial	Tree		963
Salicaceae				
<i>Casearia graveolens</i> Dalz.	Terrestrial	Tree		3252
<i>Casearia tomentosa</i> Roxb.	Terrestrial	Tree		17284
<i>Flacourtia montana</i> Grah.	Terrestrial	Tree	Endemic	271
Santalaceae				
<i>Osyris lanceolata</i> Hochst. & Steud.	Terrestrial	Shrub		6981
<i>Santalum album</i> L.	Terrestrial	Tree		6994
<i>Viscum angulatum</i> Heyne ex DC.	Parasitic	Herb		6954
<i>Viscum articulatum</i> Burm. f.	Parasitic	Shrub		6965
Sapindaceae				
<i>Allophylus cobbe</i> (L.) Raeusch.	Terrestrial	Scandent Shrub		1283
<i>Cardiospermum halicacabum</i> L.	Terrestrial	Herb		1290
<i>Dimocarpus longan</i> Lour.	Terrestrial	Tree		1292
<i>Dodonaea viscosa</i> (L.) Jacq.	Terrestrial	Shrub		1293
<i>Schleichera oleosa</i> (Lour.) Oken	Terrestrial	Tree		17354
Sapotaceae				
<i>Madhuca longifolia</i> var. <i>latifolia</i> (Roxb.) Chev.	Terrestrial	Tree		4543
<i>Mimusops elengi</i> L.	Terrestrial	Tree		
Scrophulariaceae				
<i>Buddleja asiatica</i> Lour.	Terrestrial	Shrub		
<i>Sutera dissecta</i> (Del.) Walp.	Terrestrial	Herb		5675
Smilacaceae				
<i>Smilax zeylanica</i> L.	Terrestrial	Climber		8094
Solanaceae				
<i>Datura innoxia</i> Mill.	Terrestrial	Undershrub		5327
<i>Datura metel</i> L.	Terrestrial	Undershrub		5333
<i>Physalis angulata</i> L.	Terrestrial	Herb		5367
<i>Solanum americanum</i> Mill.	Terrestrial	Herb		5402
<i>Solanum anguivi</i> Lam.	Terrestrial	Shrub		21325
<i>Solanum erianthum</i> D. Don	Terrestrial	Tree		5416
<i>Solanum giganteum</i> Jacq.	Terrestrial	Shrub		5390
<i>Solanum virginianum</i> L.	Terrestrial	Herb		5421
Tamaricaceae				
<i>Tamarix ericoides</i> Rottler & Willd.	Terrestrial	Scandent Herb		355
Thymelaeaceae				
<i>Gnidia glauca</i> (Fresen.) Gilg.	Terrestrial	Shrub		6925
Urticaceae				
<i>Boehmeria macrophylla</i> Hornem.	Terrestrial	Undershrub		7366
<i>Debregeasia longifolia</i> (Burm. f.) Wedd.	Terrestrial	Shrub		7381
<i>Girardinia diversifolia</i> (Link) Friis	Terrestrial	Herb		7393
<i>Gonostegia pentandra</i> (Roxb.) Miq.	Terrestrial	Herb		7423
<i>Laportea interrupta</i> (L.) Chew	Terrestrial	Herb		7402
<i>Lecanthus peduncularis</i> (Wall. ex Royle) Wedd.	Terrestrial	Herb		7414
<i>Pilea microphylla</i> (L.) Liebm.	Terrestrial	Herb		7417
Verbenaceae				
<i>Phyla nodiflora</i> (L.) Greene	Terrestrial	Herb		6265
Vitaceae				
<i>Ampelocissus latifolia</i> (Roxb.) Planch.	Terrestrial	Climbing Shrub		1142
<i>Cissus elongata</i> Roxb.	Terrestrial	Climber		1176
<i>Cissus javana</i> DC.	Terrestrial	Climber		1171
<i>Cissus repens</i> Lam.	Terrestrial	Climber		1190
<i>Cyphostemma trilobata</i> (Lam.) Almeida	Terrestrial	Climber		1201
<i>Cissus woodrowii</i> (Stapf ex Cooke) Sant.	Terrestrial	Shrub	Endemic	1207
<i>Cyphostemma auriculatum</i> (Roxb.) P. Singh & B. V. Shetty	Terrestrial	Climbing Shrub		1154
<i>Leea indica</i> (Burm. f.) Merr.	Terrestrial	Shrub		1219
Zingiberaceae				
<i>Curcuma pseudomontana</i> Grah.	Terrestrial	Herb	Endemic	7778

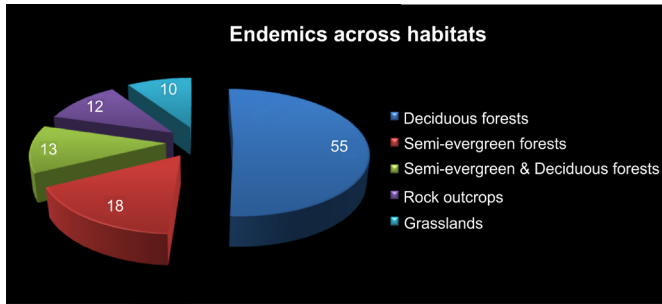


FIGURE 3. Distribution of endemics across different habitats.

ACKNOWLEDGMENTS: The authors are thankful to Director & Incharge, Botany group Agharkar Research Institutes, Pune for providing necessary facilities and encouragements.

LITERATURE CITED

- Anonymous. 2006. *Maharashtra Pollution Control Board 2006*. Pune: District Environmental Atlas of Pune District. 95 pp.
- Ansari A.A. 2008. *Crotalaria L. in India*. Dehradun: Bishen Singh Mahendra Pal Singh. 376 pp.
- Gadgil, M. and V. D. Vartak. 1980. The Sacred Groves of Maharashtra: An inventory; pp. 289-294, in: S.K. Jain (ed.) *Glimpses of Indian Ethnobotany*. Delhi: Oxford & IBH publisher. (<http://ces.iisc.ernet.in/envis/sdev/mg/pdfs/mg038.pdf>)
- Myers, N., R.A. Mittermeier, C.G. Mittermeier, G.A. Da Fonseca and J.

- Kent. 2000. Biodiversity hotspots for conservation priorities. *Nature* 403 (6772): 853–858 (doi: 10.1038/35002501).
- Santapau, H. 1953. The Flora of Khandala on the Western ghats of India. *Records of Botanical Survey India* 16(1): 1–396.
- Sharma, B.D., S. Karthikeyan, N.P. Singh and P. Lakshminarasimhan (ed.). 1996. *Flora of Maharashtra State. Monocotyledones*. Calcutta: Botanical Survey of India. 794 pp.
- Singh, N.P. and S. Karthikeyan. 2000. *Flora of Maharashtra State. Dicotyledonous. Vol. 1*. Calcutta: Botanical Survey of India. 898 pp.
- Singh, N.P., P. Lakshminarasimhan, S. Karthikeyan and P.V. Prasanna. 2001. *Flora of Maharashtra State. Dicotyledones. Vol. 2*. Calcutta: Botanical Survey of India. 1080 pp.
- The Plant List*. 2013. Version 1.1. Accessible at <http://www.theplantlist.org>. Captured on 1st December 2013.
- Vartak, V.D. 1959a. Medicinal Plants from Hilly Regions of Poona and Satara Districts, Bombay State. (A and B). *Ayurvediya Magazine* 22: 11–12; 23: 1–4.
- Vartak, V.D. 1959b. Some Edible Wild Plants from the Hilly Region of Poona District, Bombay State. *Journal of Bombay Natural History Society* 56: 8–25.
- Vartak V.D. 1959c. Some Unrecorded Grasses from Poona District, Bombay State. *Poona Agricultural College Magazine* 50: 139–145.
- Venkatareddi, B. 1969. The flora of Sakarpathar and Ambavane region of Poona District. *Bulletin of Botanical Survey of India* 11: 138–149.

RECEIVED: July 2013

ACCEPTED: July 2014

PUBLISHED ONLINE: September 2014

EDITORIAL RESPONSIBILITY: Hans-Joaquim Esser